

FOR LEASE

COMMERCE PARK MILWAUKIE

13487 SE JOHNSON RD, BLDG 2
MILWAUKIE, OR

Has excellent proximity to the I-205 freeway and access to downtown Portland with many amenities nearby including banks, post office, and several stores and restaurants.

31,997 SF building

±1,740 SF office

4 dock high loading doors (Additional are possible)

2 grade level loading doors

±22' clear height

Fully sprinklered

Call for quote

31,997

SF AVAILABLE

1,740 SF

OFFICE SIZE

22'

CLEAR HEIGHT

STEVEN KLEIN
503.221.2260
steven.klein@kidder.com

PETER STALICK
503.221.2272
peter.stalick@kidder.com

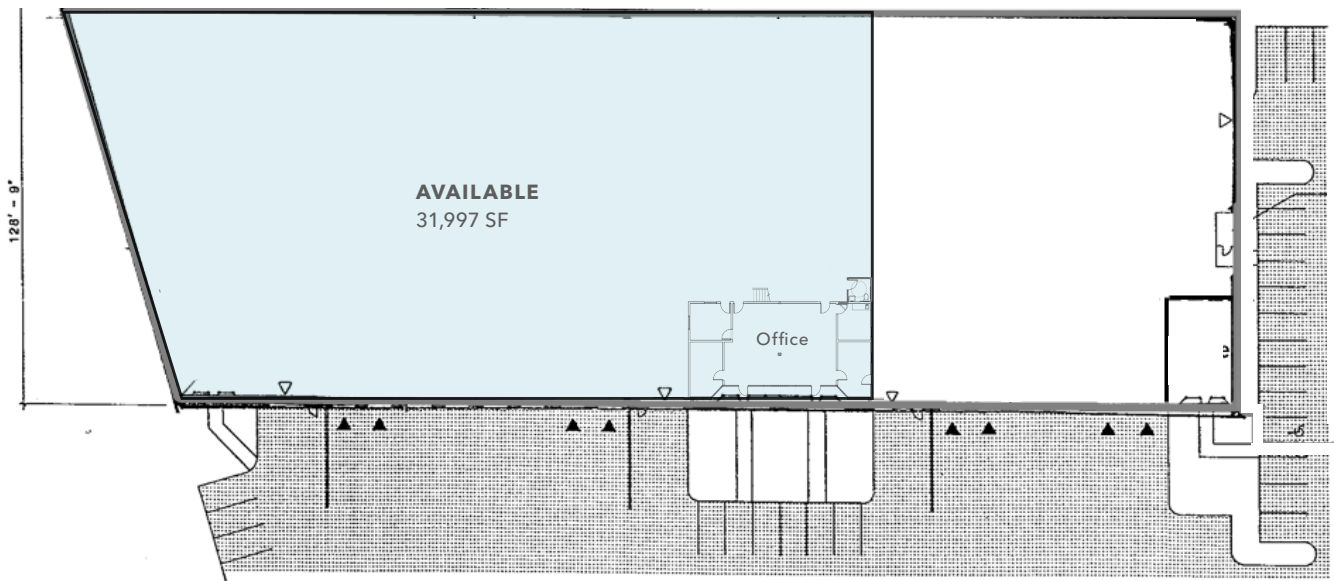
LINCOLN
PROPERTY
COMPANY

WWW.COMMERCE-PARKS.COM

KIDDER.COM

This information supplied herein is from sources we deem reliable. It is provided without any representation, warranty, or guarantee, expressed or implied as to its accuracy. Prospective Buyer or Tenant should conduct an independent investigation and verification of all matters deemed to be material, including, but not limited to, statements of income and expenses. Consult your attorney, accountant, or other professional advisor.

**km Kidder
Mathews**



FOUR

DOCK DOORS

TWO

GRADE DOORS

22'

CLEAR HEIGHT

STEVEN KLEIN

503.221.2260

steven.klein@kidder.com

PETER STALICK

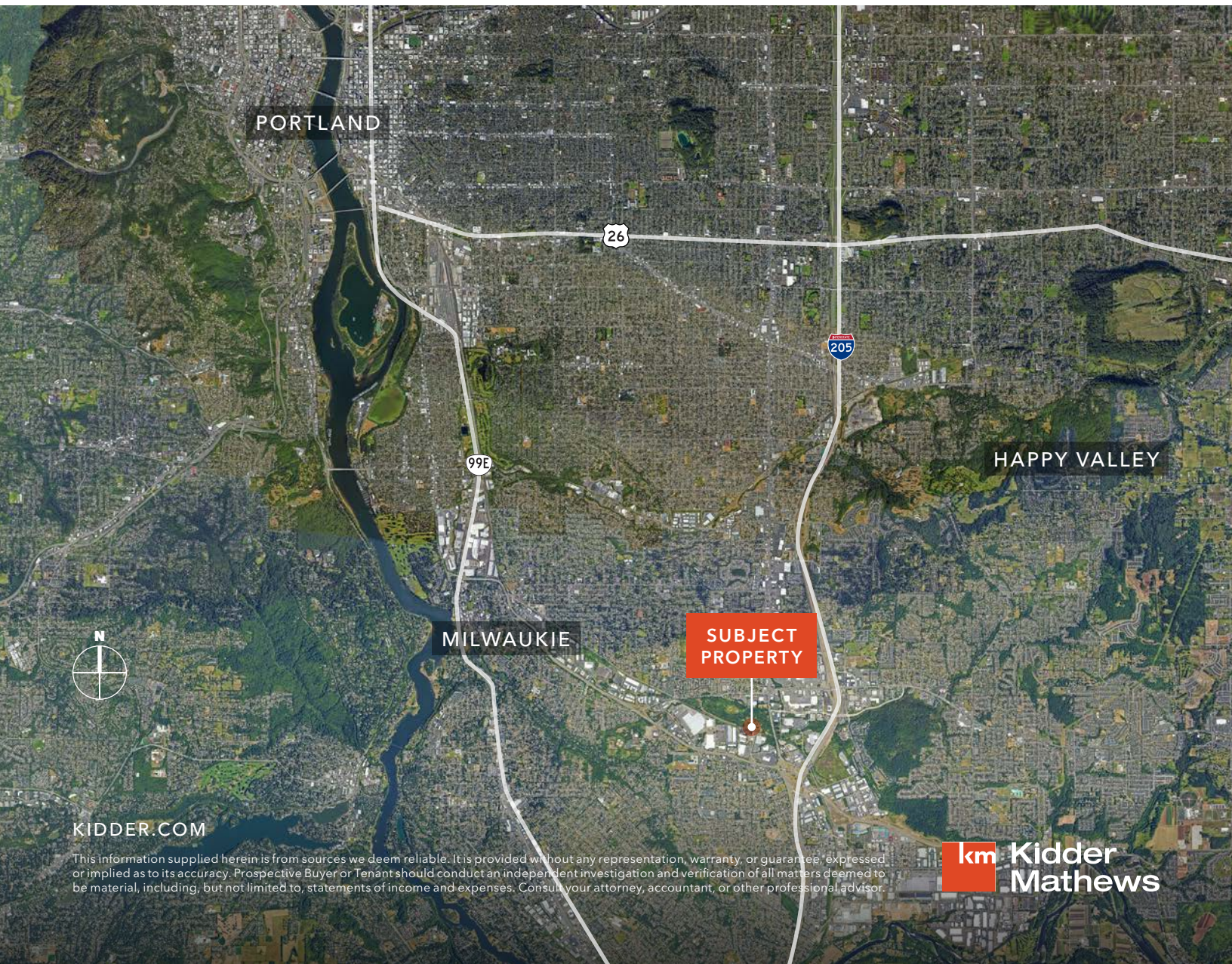
503.221.2272

peter.stalick@kidder.com

KIDDER.COM

This information supplied herein is from sources we deem reliable. It is provided without any representation, warranty, or guarantee, expressed or implied as to its accuracy. Prospective Buyer or Tenant should conduct an independent investigation and verification of all matters deemed to be material, including, but not limited to, statements of income and expenses. Consult your attorney, accountant, or other professional advisor.

COMMERCE PARK MILWAUKIE



KIDDER.COM

This information supplied herein is from sources we deem reliable. It is provided without any representation, warranty, or guarantee, expressed or implied as to its accuracy. Prospective Buyer or Tenant should conduct an independent investigation and verification of all matters deemed to be material, including, but not limited to, statements of income and expenses. Consult your attorney, accountant, or other professional advisor.

km Kidder Mathews